

# NATIONAL OYSTER REPORT

## - September 2020 -



Oysters Australia is trialling the publication of a bimonthly National Oyster Report. The intent of the report is to increase transparency, facilitating access to information. The information presented below is a summary of feedback from each jurisdiction. Thanks to the South Australian Oyster Growers Association, Oysters Tasmania & NSW Farmers Association to help collect data.

If you have any feedback, or suggested improvements on future content, please contact Andy Myers on [management@oystersaustralia.org](mailto:management@oystersaustralia.org).

### Comments from the supply chain — Blue Harvest:

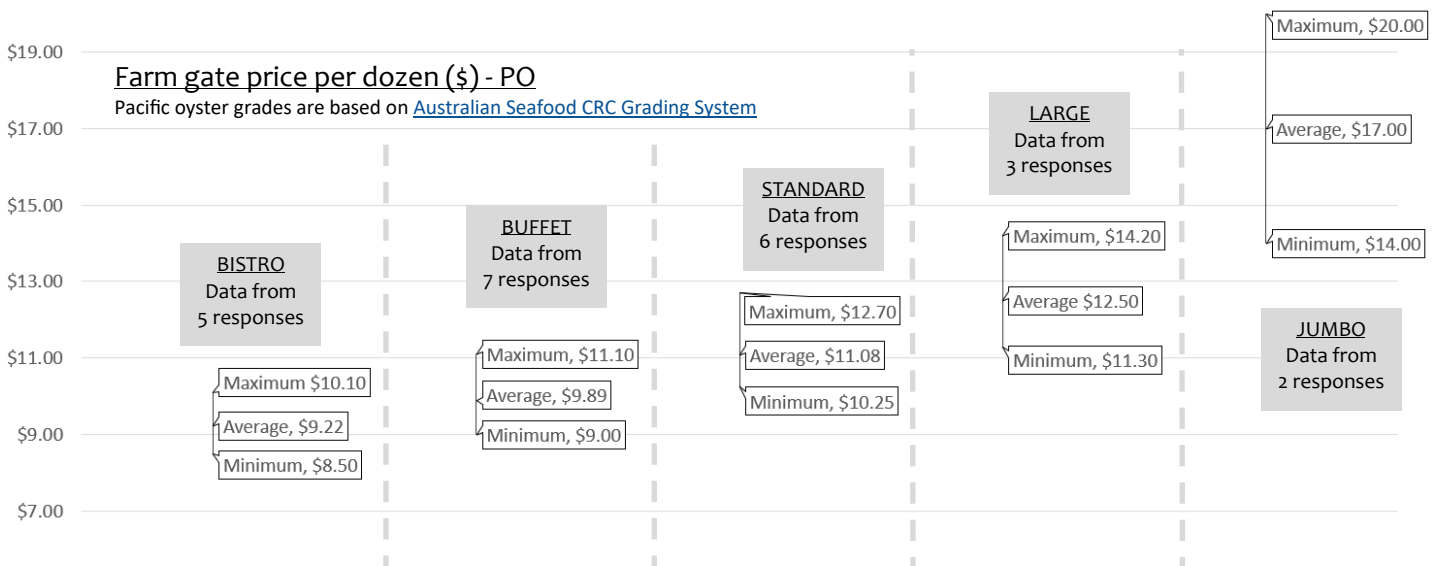
We have seen a continued increase in quality supply of Pacific Oysters coming from SA and TAS, but some drop off in the availability of Sydney Rocks over the last couple of months, however we expect this to change and the rocks to increase again in volume throughout October. Market demand is still below historical levels, however we are seeing some strengthening, as retailers' sales improve, and a slow but steady return to food service in NSW and QLD has begun. Prices have remained stable, however with supply exceeding demand, we are continuing to see an uncompromising expectation for A-grade size and condition from our customers.



[www.blueharvest.com.au](http://www.blueharvest.com.au) / 02 8355 4620

## Tasmania

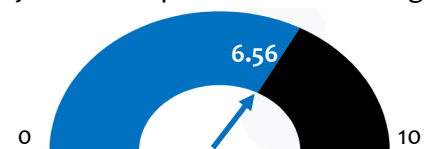
• 9 Responses received from Tasmania



### Comments

- Growth has been steady over winter, however recent rains and floods has resulted in slow conditioning
- No major mortality issues reported, or biotoxin outbreaks
- A kick is expected in both oyster growth & condition the water warms coming into Spring

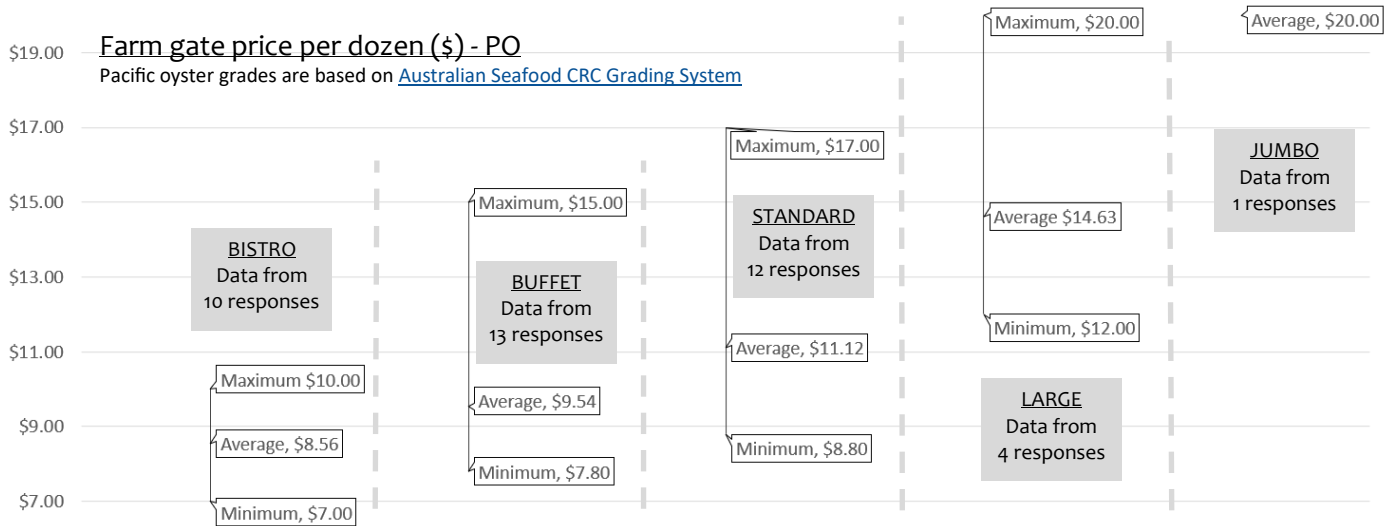
Relative production ie. volume of market ready stock compared to 2 months ago



0 = significantly less stock available  
5 = production stable  
10 = significantly more stock available

# South Australia

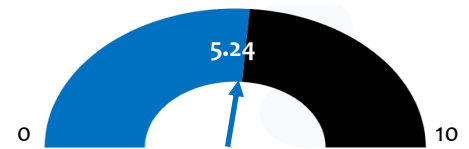
• 17 Responses received from South Australia



## Comments

- Mixed reports from growers.
- Majority are reporting relatively poor conditioning & growth over winter due to lack of food, strong winds & inconsistent spat quality of previous years.
- Others are reporting oyster condition above average for the time of year and good growth with low mortality.

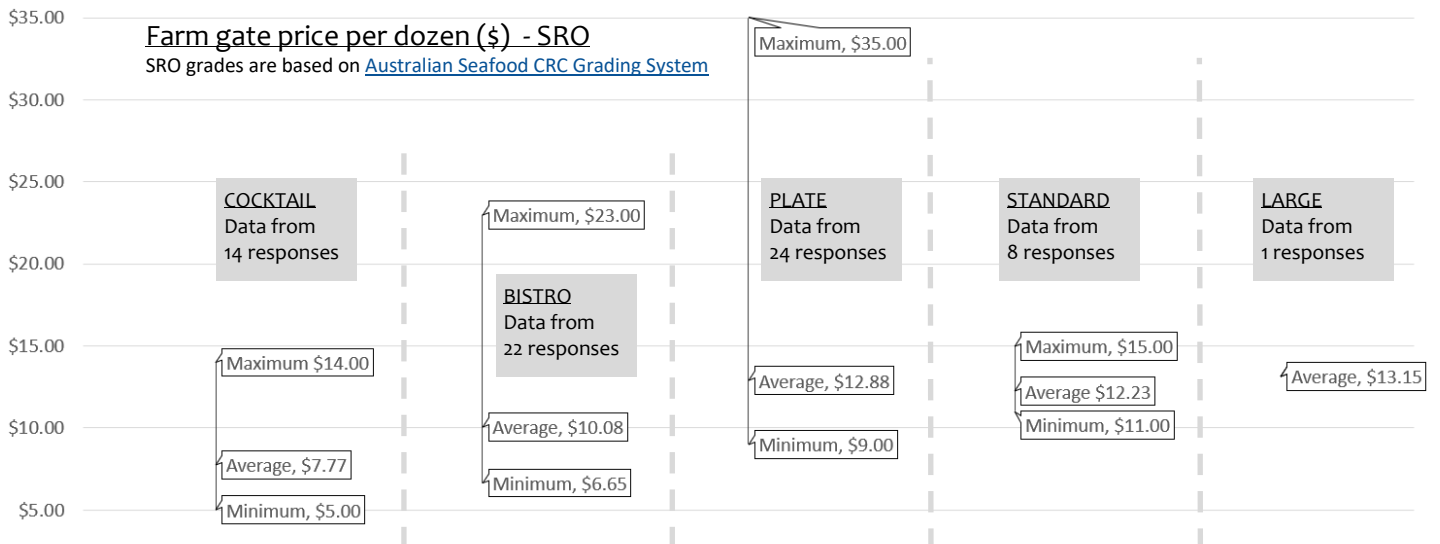
**Relative production** i.e. volume of market ready stock compared to 2 months ago



0 = significantly less stock available  
5 = production stable  
10 = significantly more stock available

# New South Wales

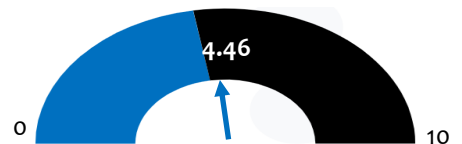
• 26 Responses received from New South Wales for SRO



## Comments

- Overall, the production volume have been pulled down by mortalities in estuaries impacted by bushfires, floods & disease outbreaks earlier in the year.
- Some estuaries are reporting slow growth & average condition. Hangover from the drought, and possibly overstocking due to the slow market. Reports of increased flatworm & mudworm.
- Some farmers, particularly in northern NSW, are reporting good growth & condition, both of which will pick up further in the next couple of months.

**Relative production** i.e. volume of market ready stock compared to 2 months ago



0 = significantly less stock available  
5 = production stable  
10 = significantly more stock available